



**Hard Rock LIVE on the Las Vegas Strip
Tech Specs**



Stage and Audio Specs

Capacity: 1200 General Admission Standing

Stage Dimensions

20x28x2.5 ft Stage

8x8x2' Drum Riser (In 2 sections)

Our ceiling is 14' high from the sunken floor in front of our stage. Please note that there is some truss in that area so you really only have about 12'.

Main Floor Dimensions

48' Across

37' from front of stage to soundboard

45' from front of stage to railing behind soundboard





Front of House PA

4 Bose SM5 array
2 Bose SM10 array
2 Bose SM20 array
10 Bose SMS 118 Subwoofer
1 Bose Control Space ESP-880
1 Bose Power Match PM 8500 (Highs)
2 Bose Power Match PM 8500 (Mids)
5 Bose Power Match PM 8500 (Subs)

Front of House Mix Position

Midas PRO2 (48 Channel)
1 CD Player
Spotify

Monitor System

Midas PRO2 (48 Channel)

*** (2) Midas DL231 Digital Stage Boxes via CAT 5

Box 1: Channels 1-24

Box 2: Channels 25-48

We do not supply copper split snake (analog)

7 Monitor Wedge Mixes
8 EV X Array XW15A Biamped Wedges
4 EV DX46 System Processors
8 EV CP 4000S Amplifiers
2 Midas DL231 Stage Box
6 12-Channel Subsnakes



Mic Package

- 6 Shure SM 58
- 5 Shure SM 57
- 2 Shure Beta 52A
- 4 Shure ULXD SM 58 Wireless Hand Helds
- 1 Shure Beta 57
- 1 Shure Beta 58
- 2 EV N/D 767A
- 3 Sennheiser E609
- 2 Sennheiser 901
- 5 Sennheiser 604
- 1 Beyer Dynamic M88

- 2 Whirlwind IMP2 DI
- 3 Whirlwind PCI DI
- 4 Radial Pro DI
- 4 Radial Pro2 DI

LIGHTING SPECS

US Truss:

-8 Martin Mac 101 RGB

US 10' Truss Towers:

-4 Martin Mac 350 Entour Spots

-6 Elation Cuepix Strips

Floor:

-4 Martin Mac 101 RGB

-4 Elation Cuepix Strips

-2 Unique 2.1 hazers

FOH Truss:

-2 Source 4 Lekos 19°

-6 Source 4 PARs (Front Wash)

-6 Chauvet COLORado 1 Quad Tour (Front Wash)

-3 Martin Mac 101 RGB

-2 Martin Mac 350 Entour Spots

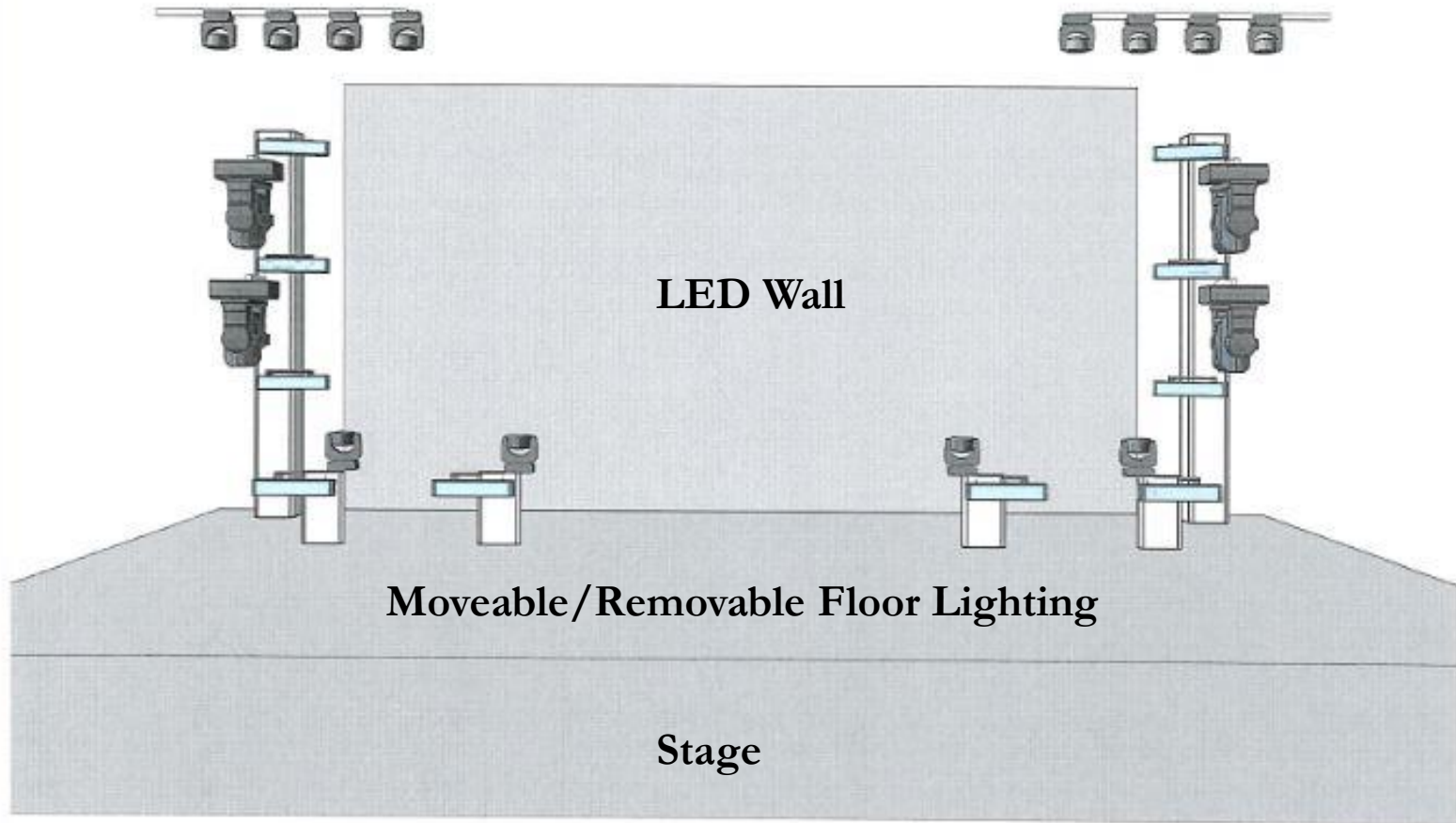
Control:

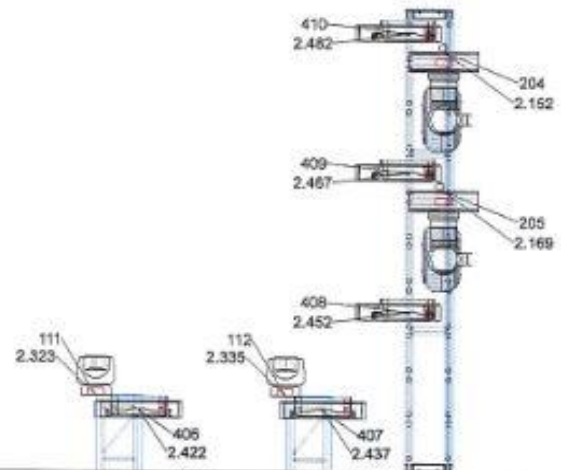
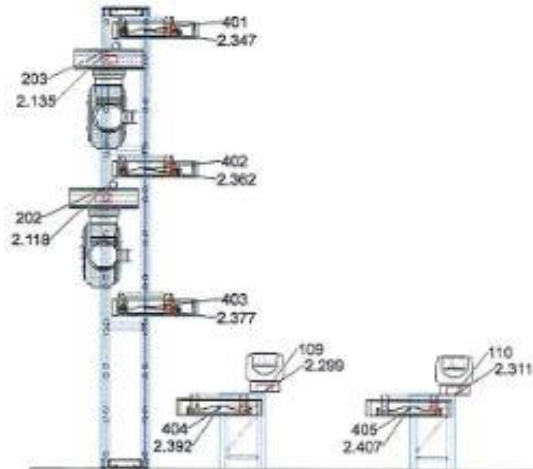
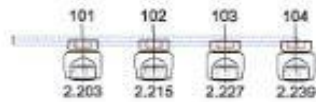
-1 GrandMA2 Ultra Light Console

4 DMX lines ran US

1 Ethernet line ran US (Art-net/MA-Net/sACN)







Martin Mac 101
(12ch Raw)

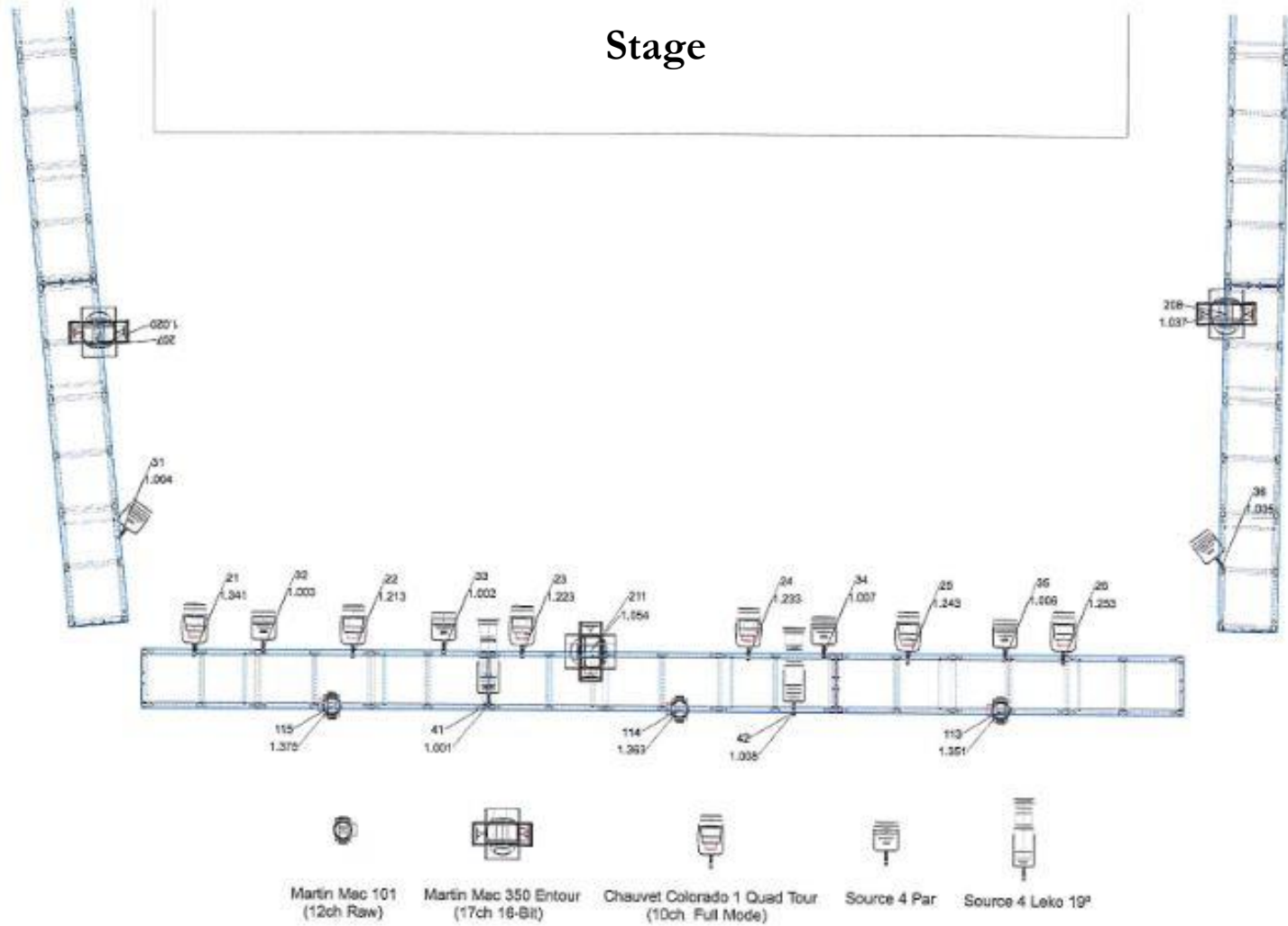


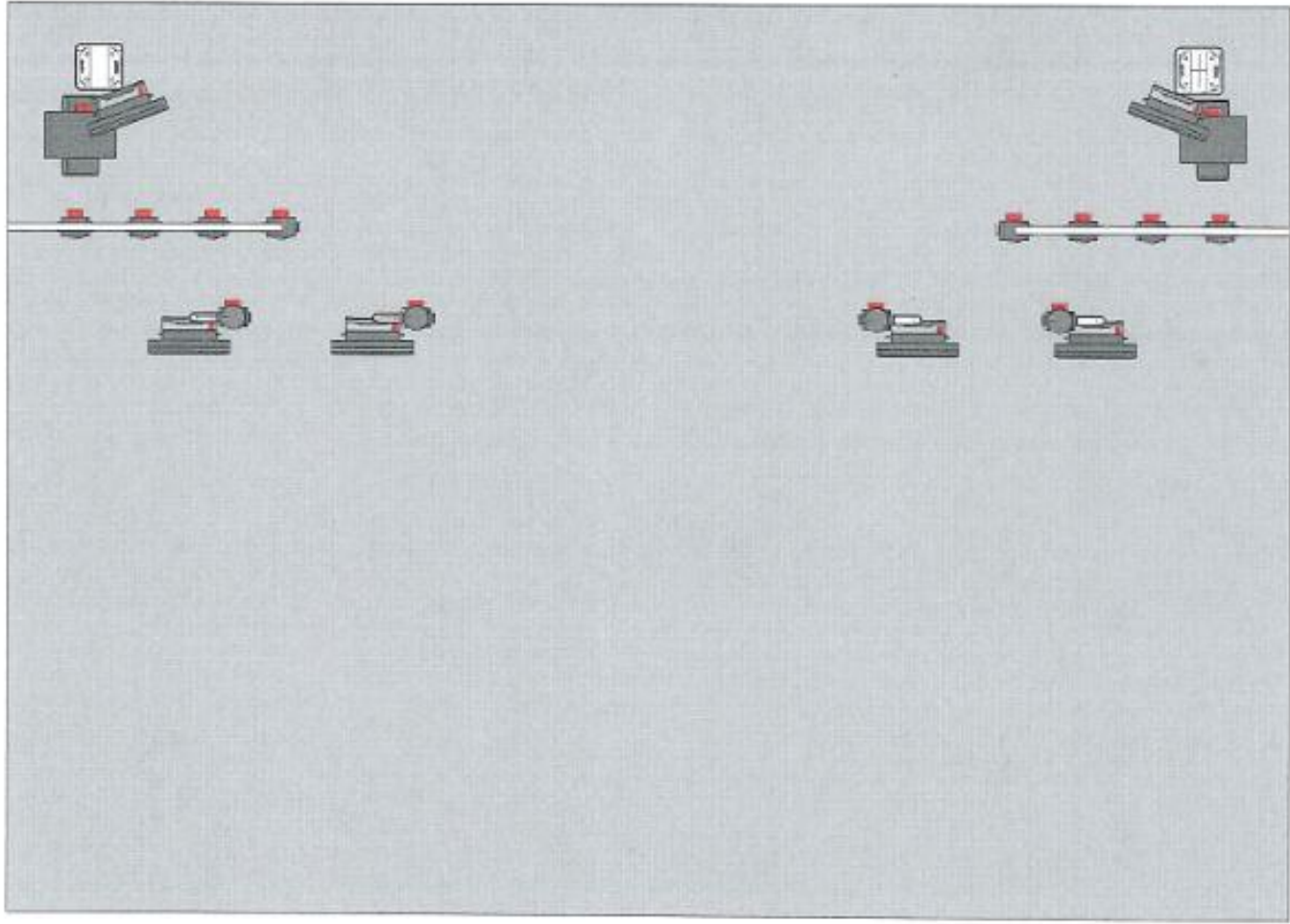
Martin Mac 350 Entour
(17ch 16-Bit)



Elation Cuepix Strip-Tri
(15ch Full Pixel Basic)

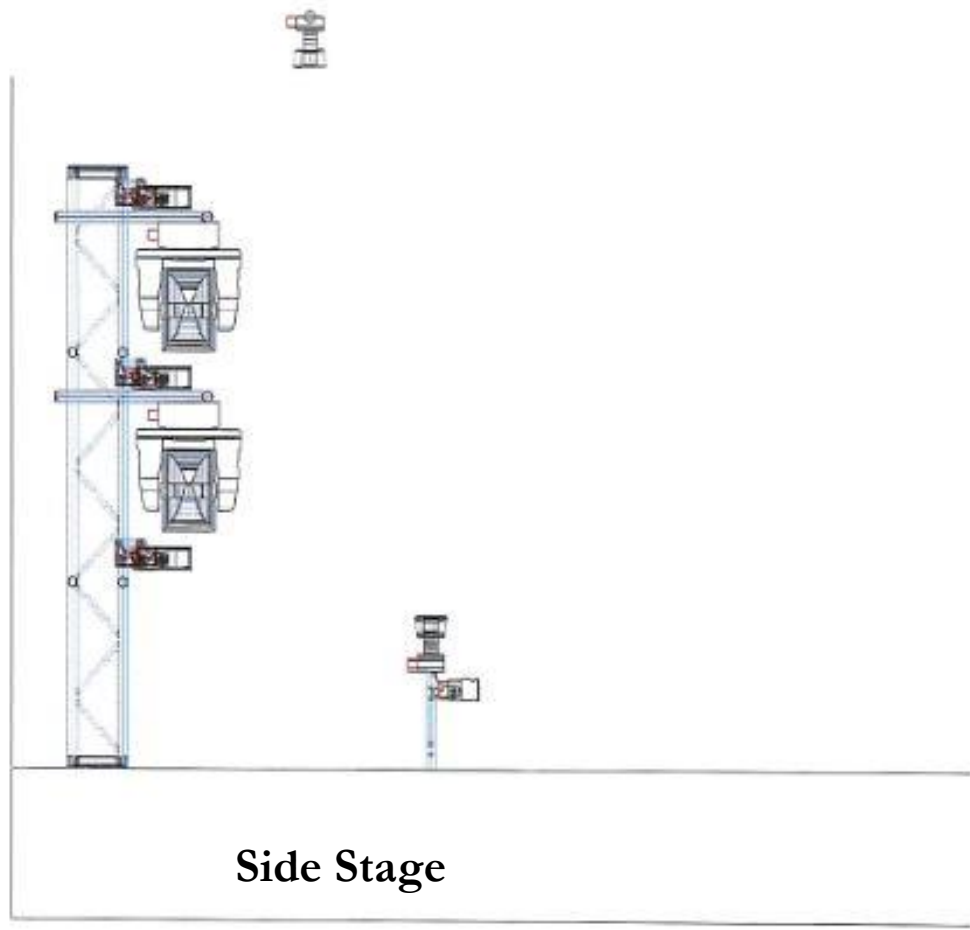
Stage





Hard Rock
CAFE

Legends Only



Side Stage



Backline (Subject to Tech Advance):

(1) Ddrum Premiere & (1) Infinity kit

-10" Tom

-12" Tom

-14" Tom

-16" Tom

-22" Kick Drum

-No Cymbals, Have Snare

-(2) PDP Hi-Hat Stands/Tri-leg

*Drummer must bring Hi Hat Clutch

-(6) DW Boom Cymbal Stands

-(3) DW Snare Stands

-(2) Drum Thrones/1 circle/1 bicycle style

-(1) DW 3000 Kick Pedal

-Ampeg SVT Classic Bass Head/Ampeg SVT 810E Cab

Guitar Amps:

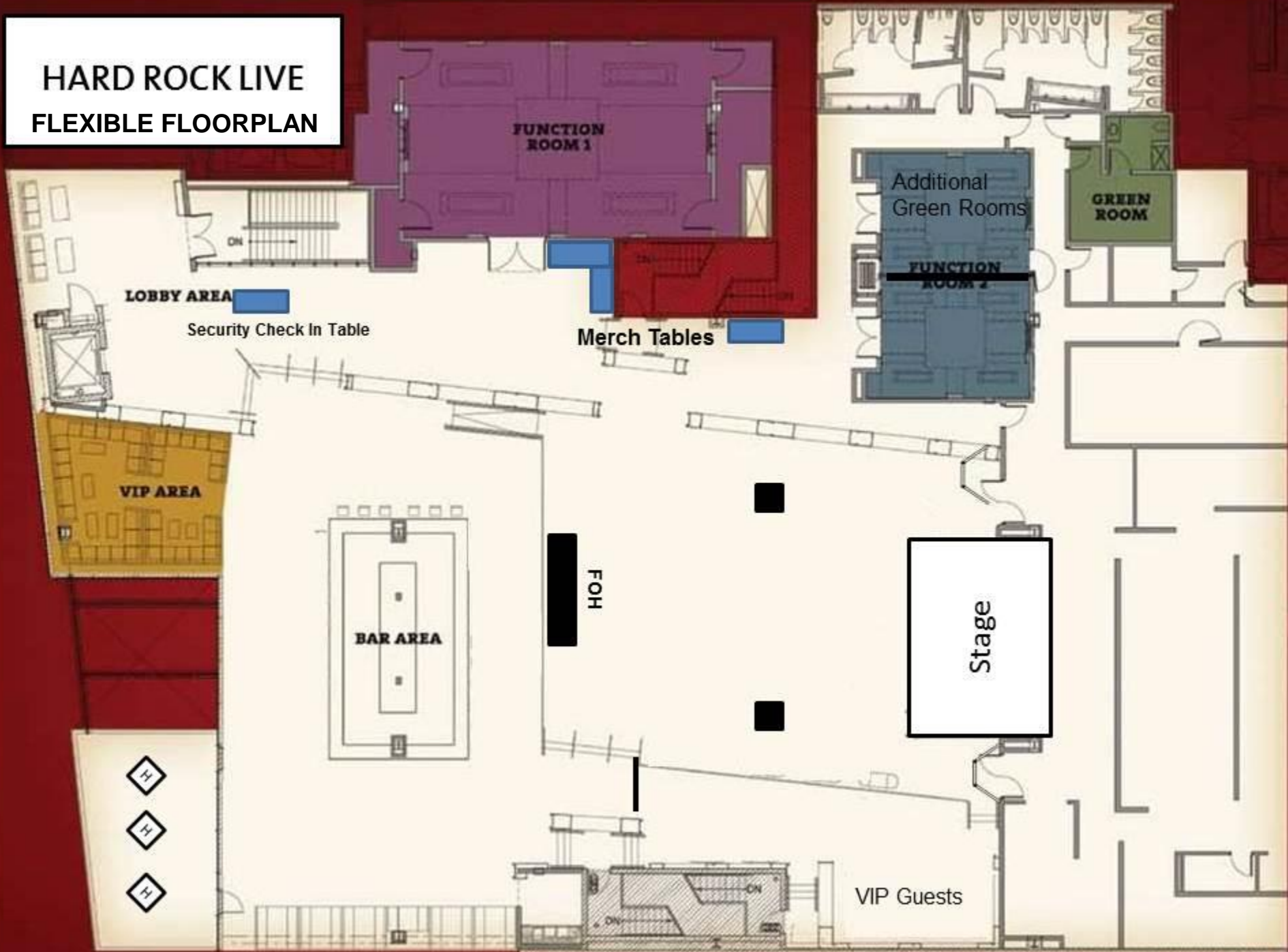
-Marshall MG100HCFX Head

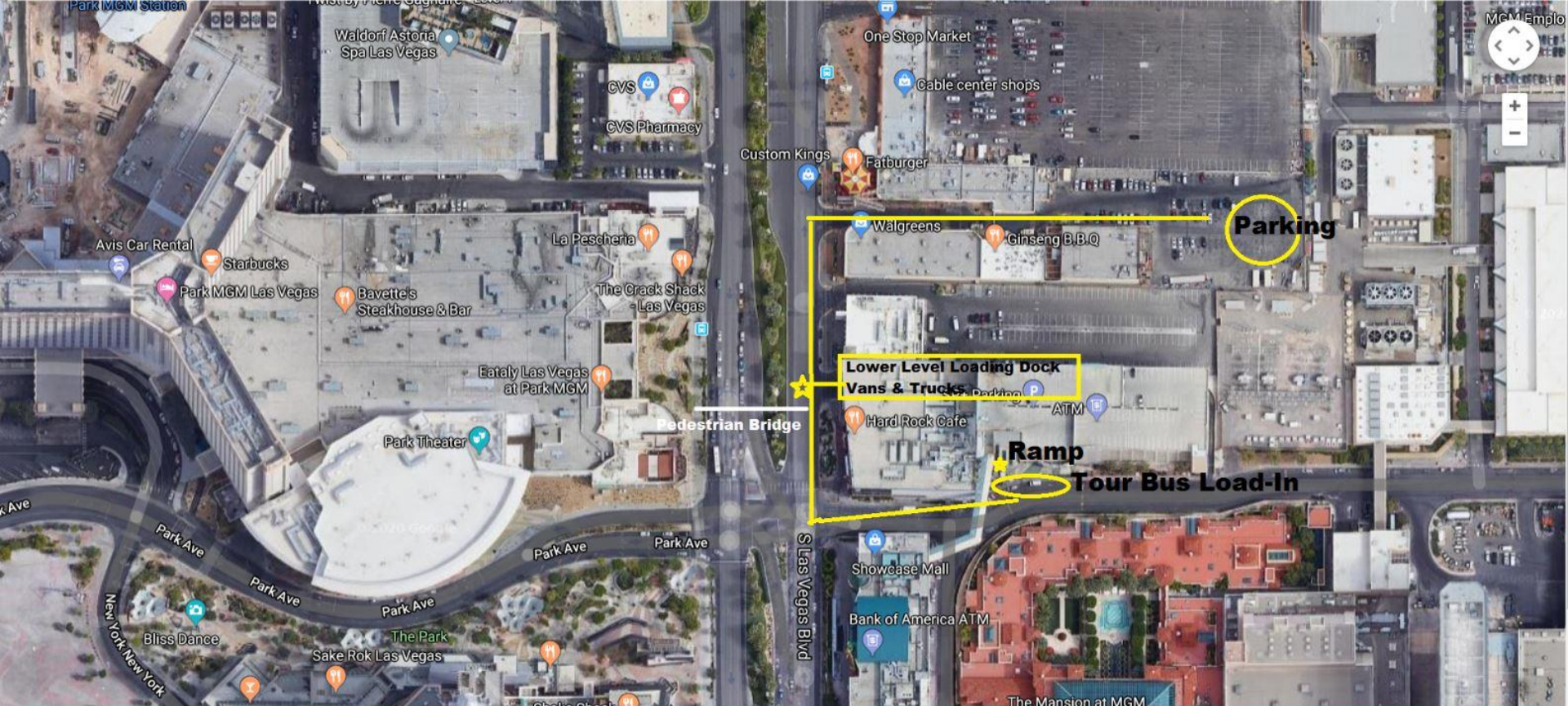
-Peavey 4x12 Cab

-Marshall JCM 2000 Head

-Marshall 1960A 4x12 Cab

HARD ROCK LIVE FLEXIBLE FLOORPLAN





**Take Load-in Elevator to Level 3 for the venue
Stage is through the hallway on your immediate right**





**3771 Las Vegas Blvd S
(Across from T-Mobile Arena and Park MGM)**

Talent and Production Contact:
Michelle Queen
Office: 702.650.8581
Email: michelle.queen@hardrock.com





See You At The Show!

